

Population Growth ...



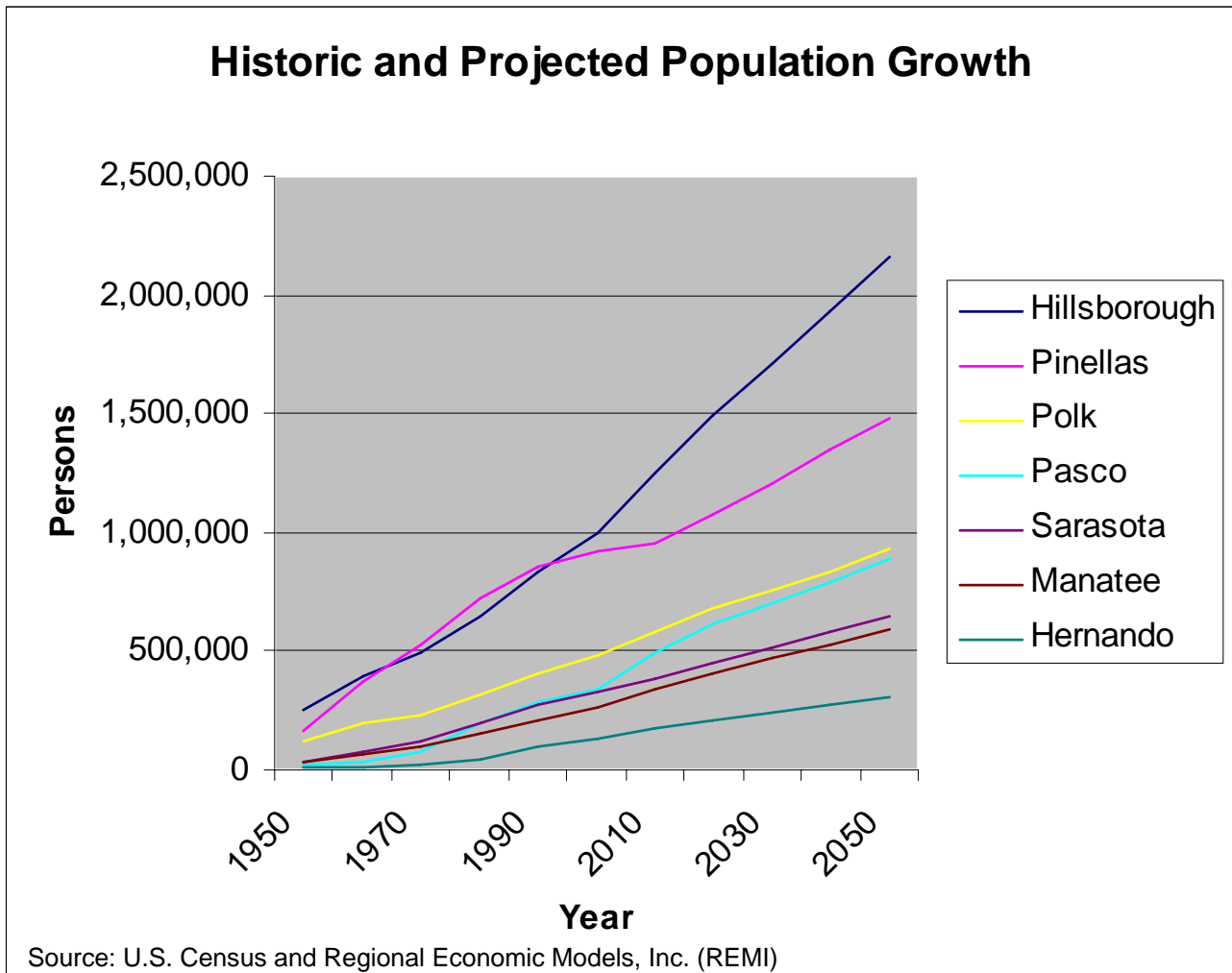
The regional balance will shift.

By 2050 the population of the seven-county region will increase nearly 84% and exceed seven million. Today, a region of seven million people would rank fourth in the nation behind Chicago and ahead of Philadelphia.

Hernando, Hillsborough, Manatee, and Pasco counties will each double in population by 2050. Even Pinellas County with the least available land for expansion will gain 60% more population to nearly 1.5 million people by 2050.

Today the region has two major urban cores with Pinellas and Hillsborough counties each with over 900,000 people. By 2050, the regional balance will shift somewhat as there will be four counties with 900,000 or more people as Pasco and Polk counties reach that threshold approaching a million people.

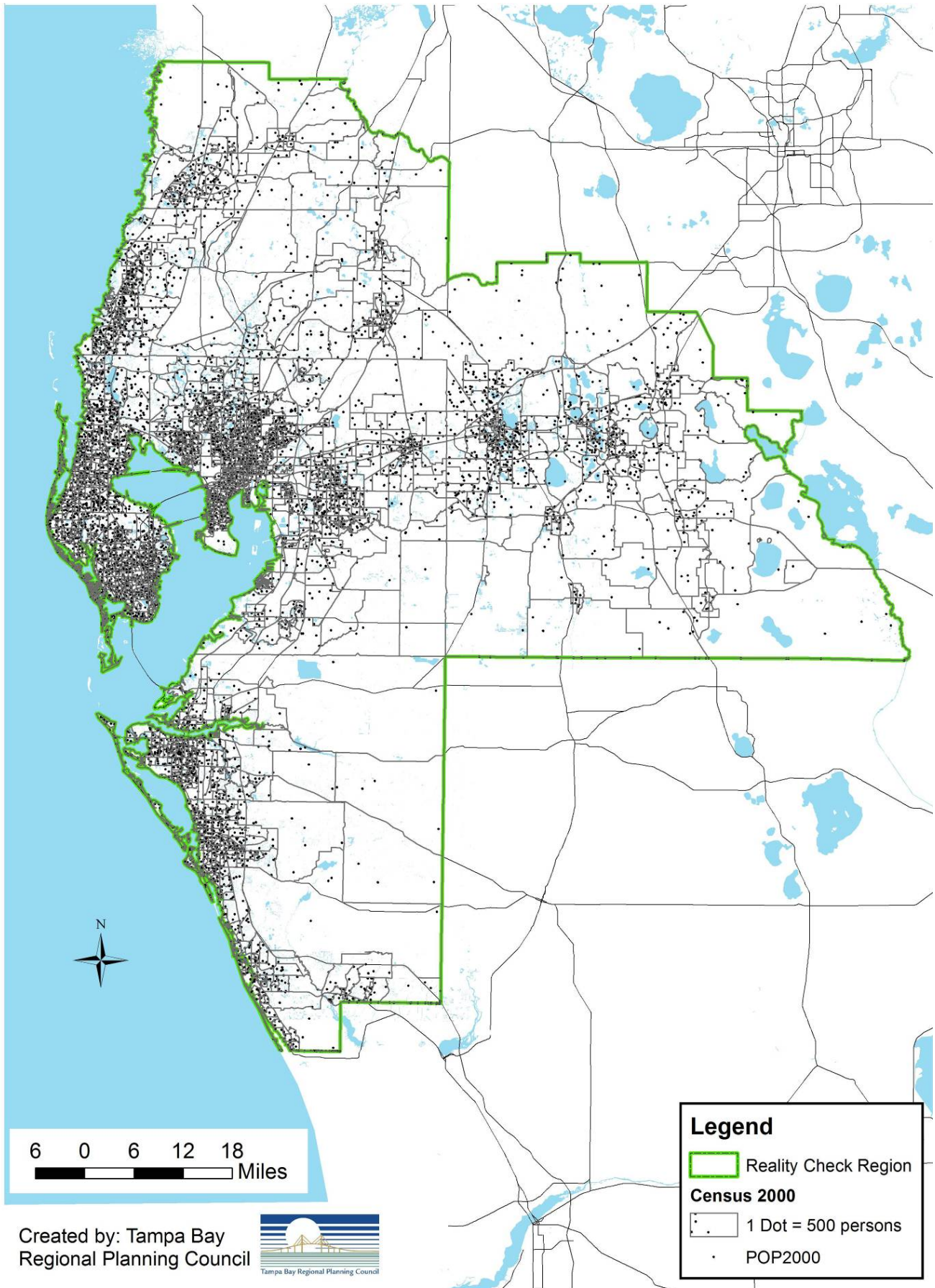
REGIONAL DATA - POPULATION TRENDS



County	Total Population (2005)	Projected Population (2050)	Percent Growth (2005-2050)
Hernando	152,993	309,434	102.3
Hillsborough	1,123,785	2,163,580	92.5
Manatee	302,019	586,701	94.3
Pasco	418,902	891,234	112.8
Pinellas	926,069	1,481,095	59.9
Polk	532,142	929,407	74.7
Sarasota	356,515	647,472	81.6
Region Totals	3,812,425	7,008,923	83.8

Source: Regional Economic Models, Inc. (REMI)


POPULATION DISTRIBUTION/DENSITY: CENSUS 2000




Created by: Tampa Bay
Regional Planning Council



Legend

 Reality Check Region

Census 2000

 1 Dot = 500 persons

 POP2000

EMPLOYMENT & DEMOGRAPHICS

Employment in the seven-county region is projected to increase, from the current 2.2 million, nearly 72% by 2050. At that rate of growth, regional employment will exceed 3.7 million by 2050. Nearly two-thirds of those jobs will be concentrated in Hillsborough and Pinellas counties in 2050, the same proportion as currently exists in those two core counties.

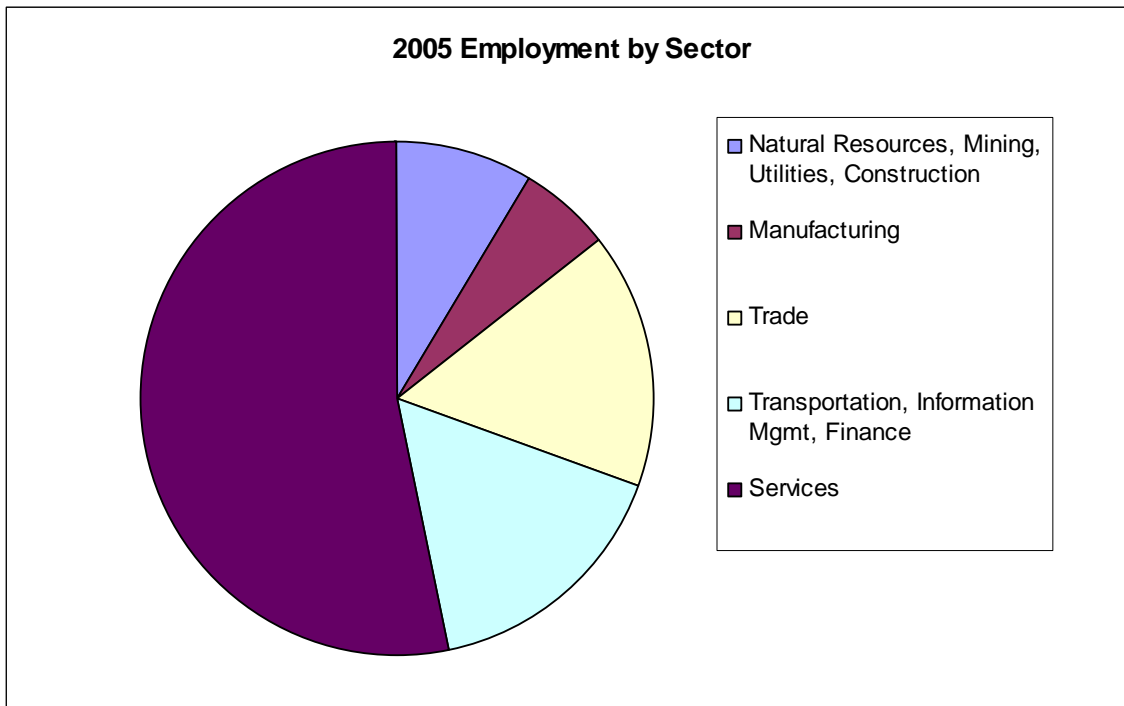
Current and Projected Jobs

County	2005	2010	2020	2030	2040	2050
Hernando	52,139	58,849	66,719	73,942	84,086	97,131
Hillsborough	797,851	897,778	1,020,825	1,117,994	1,245,076	1,382,464
Manatee	170,155	190,593	215,720	236,745	263,424	292,364
Pasco	116,237	132,753	153,722	172,204	196,598	225,284
Pinellas	586,605	652,251	723,740	787,388	873,638	969,798
Polk	252,519	276,601	303,195	324,530	355,277	391,595
Sarasota	214,409	242,988	276,365	307,416	349,041	396,699
Region Totals	2,189,915	2,451,813	2,760,286	3,020,219	3,367,140	3,755,335

Source: Regional Economic Models, Inc. (REMI)

JOB GROWTH AND LOCATION TRENDS

More than a million and a half more people will be employed in the Tampa Bay Region in 45 years than currently work here. The projected job growth by county out to 2050 varies from nearly 94% for Pasco County to 55% for Polk County. The average rate of projected employment growth for the region is 72%. Currently the majority of employment is in the service sector, with retail and wholesale trade the second largest sector. Transportation, Information Management, and Finance make-up the third largest employment sector.

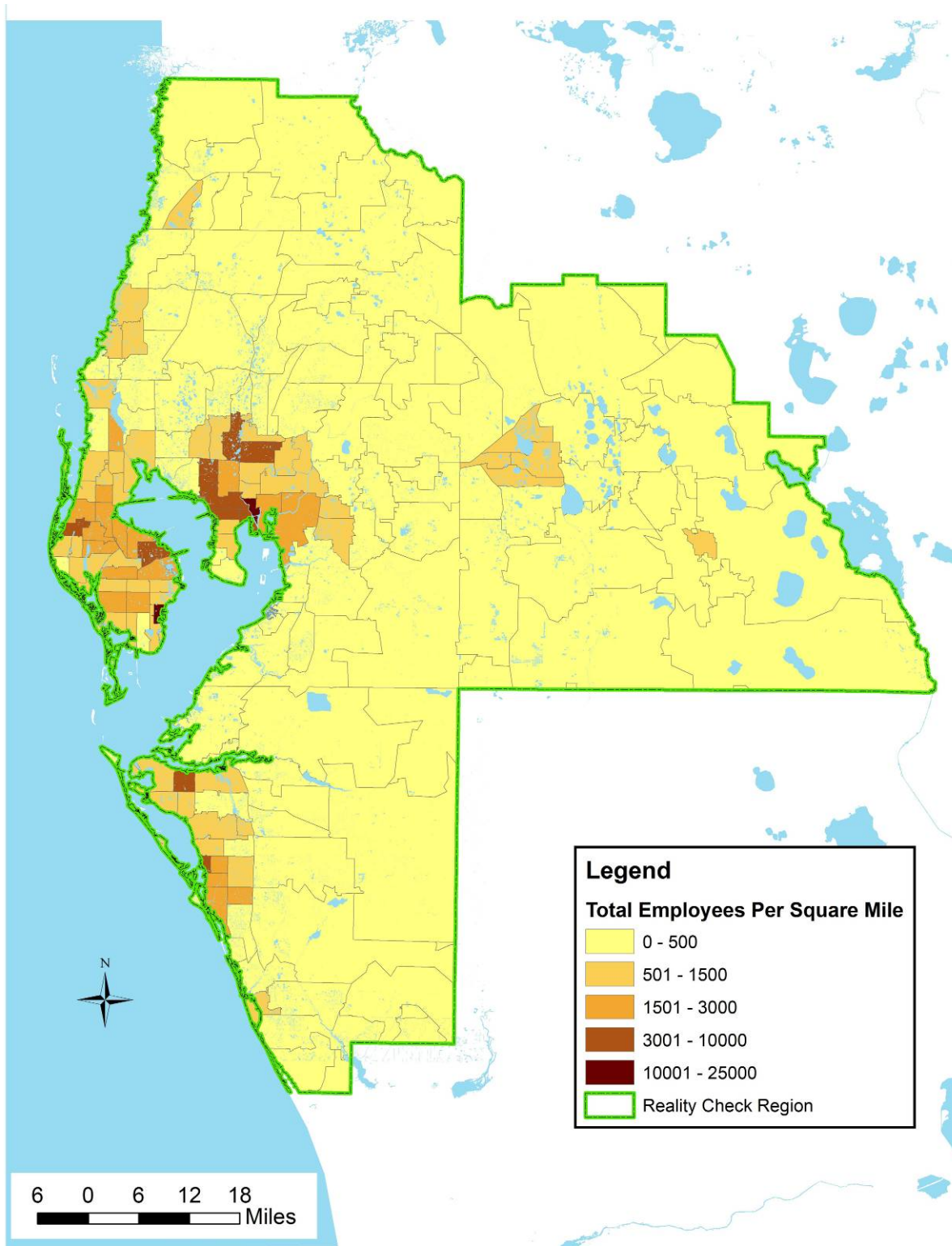


Source: Regional Economic Models Incorporated (REMI)

County	Total Jobs (2005)	Projected Total Jobs (2050)	Percent Growth (2005-2050)
Hernando	52,139	97,131	86.3
Hillsborough	797,851	1,382,464	73.3
Manatee	170,155	292,364	71.8
Pasco	116,237	225,284	93.8
Pinellas	586,605	969,798	65.3
Polk	252,519	391,595	55.1
Sarasota	214,409	396,699	85.0
Region Totals	2,189,915	3,755,335	71.5

Source: Regional Economic Models Incorporated (REMI)

JOBS BY ZIP CODE



Created by: Tampa Bay
Regional Planning Council



Source: ES202 provided by Florida Bureau of Labor Statistics (2006)